



ORLANDO REID

ORLANDO REID

Wandsworth Road, London, SW8

£425,000



ORLANDO REID

SUMMARY

This modern apartment sits peacefully back from Wandsworth Road and boasts a pleasing contemporary specification throughout. The property comprises master bedroom, modern bathroom, large reception room and the bright and airy kitchen. This wonderful property would make an ideal first time purchase, buy-to-let investment or London pied-a-terre and is offered to the market with no onward chain and a long lease.

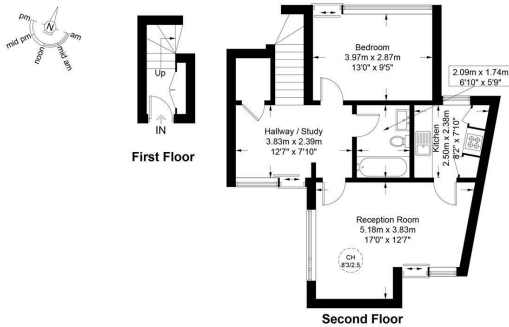
The building "The Old Piano Works" was constructed in 2011 and is made up of 4 flats, making it an intimate, boutique, modern and unique development. The apartment benefits from having amazing views of Nine Elms and The City when you are inside the flat.

With great transport links across South London via the Overground (2 min walk) and Northern Line to the City via Clapham North or Common (12 min walk). Clapham Old Town is within around a 10 minute walk of the flat where you will find the green space of the Common, bistros, pubs and restaurants. There are many sought after amenities in this area. It is also walking distance to the shops and restaurants to the river and beautiful Battersea Power Station development where you can find the modern shopping centre, river walks and lovely restaurants.

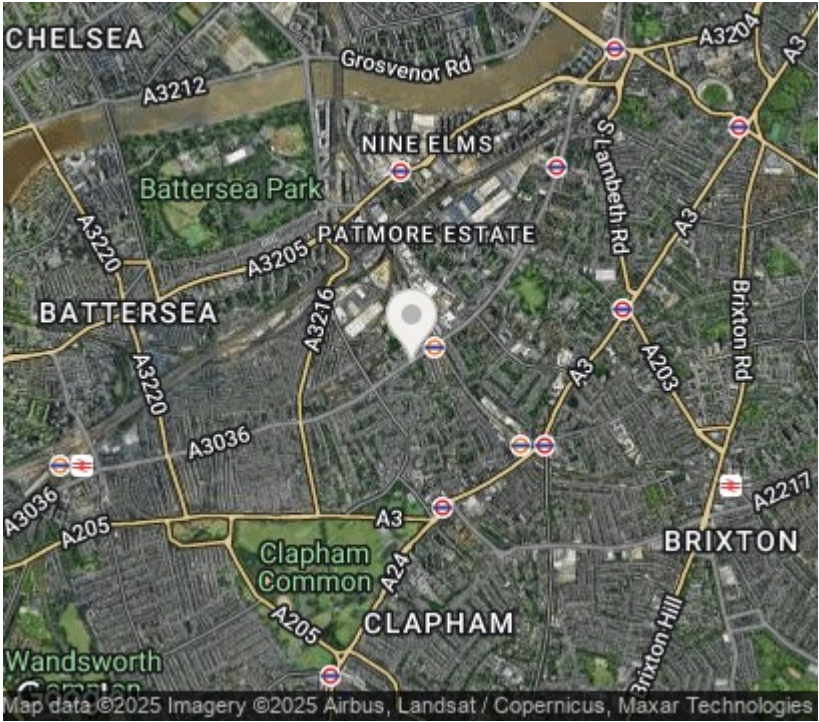


Wandsworth Road, SW8

Approximate Gross Internal Area = 630 sq ft / 58.5 sq m



This plan is for layout guidance only and is not drawn to scale unless stated. All dimensions, including windows, doors, and the Total Gross Internal Area (GIA), are approximate. For precise measurements, please consult a qualified architect or surveyor before making any decisions based on this plan.



Orlando Reid Sales 1-3 Old Town, Clapham, London, SW4 0JT

Tel: 020 7627 3197

Email: sales@orlandoreid.co.uk

Agents Note: Whilst every care has been taken to prepare these sales particulars, they are for guidance purposes only. All measurements are approximate are for general guidance purposes only and whilst every care has been taken to ensure their accuracy, they should not be relied upon and potential buyers are advised to recheck the measurements.